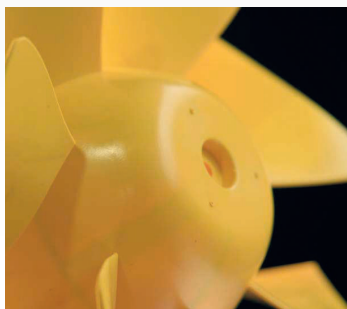


ETAMASTER

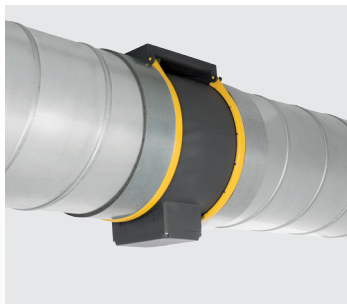


ETAMASTER



HIGHEST EFFICIENCY DUE TO IMPROVED AERODYNAMICS

Based on our experience from 20 years of development and the design of fans, our products are of high quality in many respects. The ETAMASTER has become even more efficient after we optimised the meridian channel and changed the geometry of the rotor and the stator.



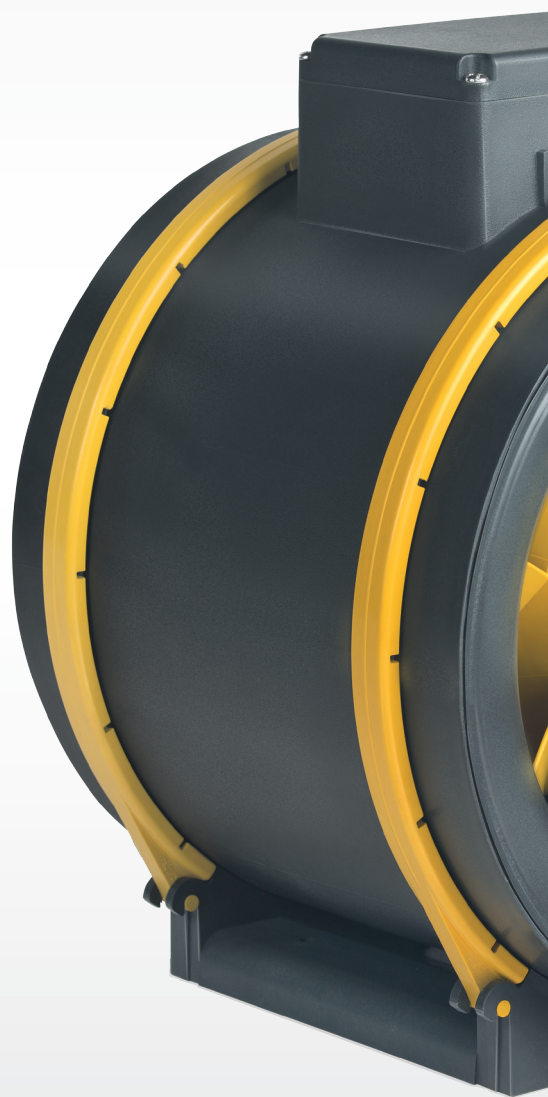
EXPOSED INSTALLATION

The design of the product combined with the mixed flow principle leads to a compact fan. The fan does not extend beyond the canal system. This leads to attractive visible installations.



EVEN QUIETER

By optimising the aerodynamics, we not only achieved a better efficiency but also further increased the smooth operation. You know best what difference 3 decibel can make in terms of the smooth operation.





ROBUST PLASTIC HOUSING

There are additionally imbedded glass fibres in the plastic housing. This increases the heat resistance, stiffness and stability of the fan.



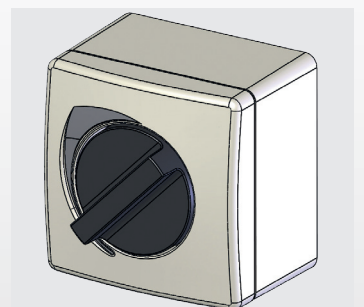
SIMPLIFIED MAINTENANCE AND MOUNTING

On several versions, we integrated the ventilation duct adapter into the mounting bracket. In this case you have to mount the adapter first and after that the fan with two screws. The connections to the pipe system remain during the mounting or cleaning of the fan



ECONOMIC VOLUME FLOW CONTROL

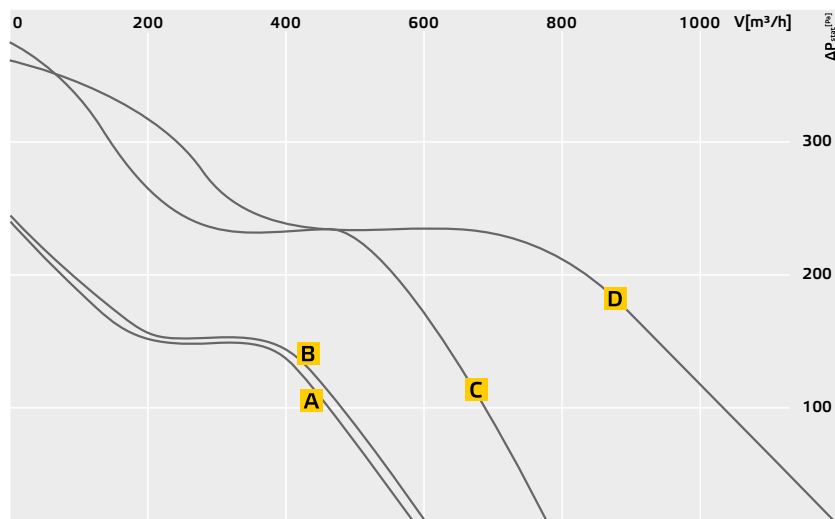
Due to the speed steps at the motor side, the ETAMASTER M is the most inexpensive version to regulate the air performance manually. All you need is the affordable three-step switch from our product range to adjust the speed.



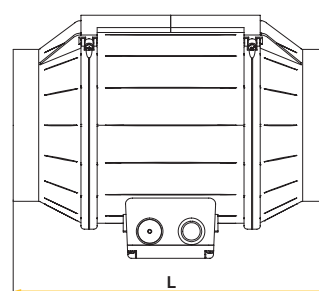
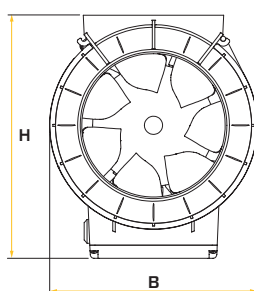
In its essential elements, the ETAMASTER is based on the construction of the ETALINE. The efficiency and the smooth operation again have been improved in this stage of development.

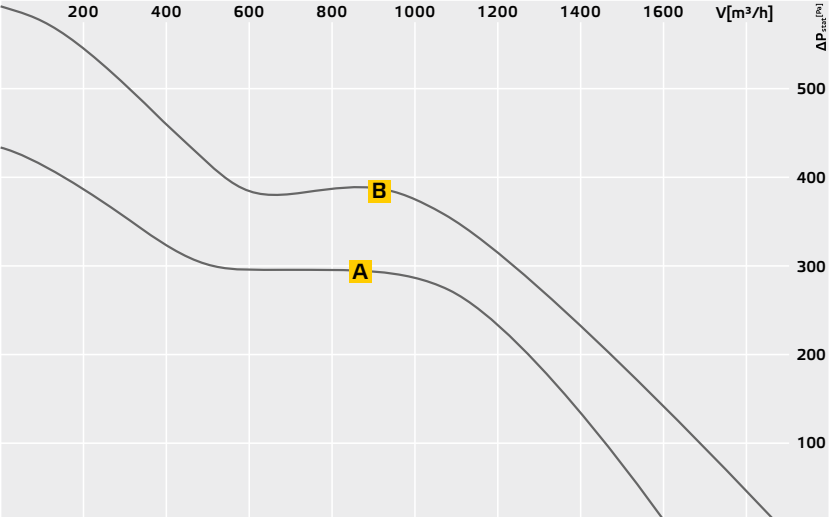
THE MODELS

TECHNICAL DATA

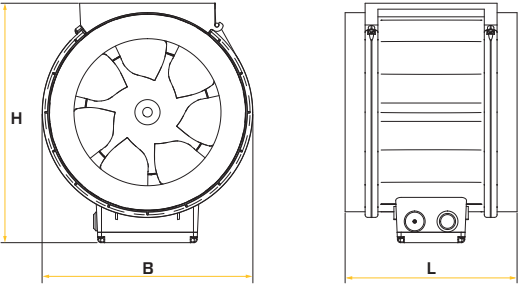


Typ		U_N V	f_N Hz	I_{Max} A	P_N W	V_L m³/h	η_{st} %	η_t	LxBxH [mm]
A	EM 150L E2M	230V ~	50	0,3	46	600	31	37	309 x 204 x 239
B	EM 160 E2M	230V ~	50	0,3	45	615	34	38	289 x 204 x 239
C	EM 160 EC	230V	50	0,5	61	790	48	52	289 x 204 x 239
D	EM 200 E2M	230V ~	50	0,6	117	1220	41	46	325 x 246 x 280





Typ		U _N V	f _N Hz	I _{Max} A	P _N W	V _L m³/h	η _{st} %	η _t	LxBxH [mm]
A	EM 250 E2M	230V ~	50	0,8	160	1625	51	54	215 x 264 x 299
B	EM 250 EC	230V	50	1,5	183	1890	57	59	215 x 264 x 299



EM

200

E

2

M

Model range:
EM : Etamaster

Nominal Diameter:
150
160
200
250

Capacity:
L : Large

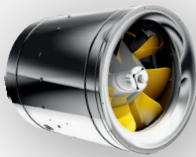
Motor:
E2 : Single phase / 2poles
EC : EC Motor

Speed control:
M : Multi Speed

OUR RANGE OF PRODUCTS

ETALINE THE ENERGY SAVER

The No.1 energy saving fan, has the lowest power consumption in its class. Optionally available with AC or EC motors.



COMPACT AIR HANDLING UNITS

High efficiency heat recovery units with 93% efficiency, allowing for a pleasant climate with little expenditure of energy.



EXHAUST FANS

The compact professionals for industrial and kitchen exhaust. Design according to VDI 2052 and available with demand actuated constant pressure controller.



DUCT FANS

The forward and backward curved impellers offer a wide range of applications. For all models, the fan unit simply swing-out.



ROOF FANS

The maintenance friendly fans for roof mounting. Available with integrated isolator switch and high quality sound insulation.



IN LINE TUBE FANS

Our impellers offer the highest performance with compact dimensions. The sound insulated fan boxes are characterized by very low noise level.



ruck Ventilatoren GmbH

Max-Planck-Strasse 5
D-97944 Boxberg

Tel +49 (0) 7930 9211-300
Fax +49 (0) 7930 9211-166

info@ruck.eu
www.ruck.eu